

Consider the PossibLity Study

People with atopic dermatitis (AtD, also called eczema) often have a hard time managing their symptoms. It can cause very itchy skin, rashes, and skin that is cracked, inflamed, or swollen. These problems can make daily life difficult, even when using different medications or creams to help.

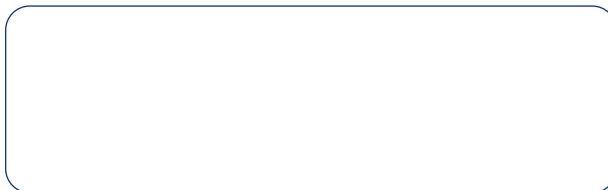
The PossibLity Study will test a study medication called galvokimig to find out whether it can improve atopic dermatitis symptoms, what it does in the body and what kind of side effects people may have.

Galvokimig is designed to work by stopping certain proteins of the immune system from working. If galvokimig works the way that researchers think it does, it could help people with AtD have less inflammation and improve their symptoms. The goal of the PossibLity study is to find out if this is the case.

UCB has been working with people who have AtD and with AtD patient organizations to help design the PossibLity Study and its materials. This helped UCB create a study that better fits the needs of people living with AtD.



If you'd like more information about the PossibLity Study, please visit the study website or contact



www.possibilitystudy.com

This study is sponsored by UCB, a global biopharma company focusing on immunology and neurology disorders, including skin diseases like atopic dermatitis.



Is eczema impacting your daily life?



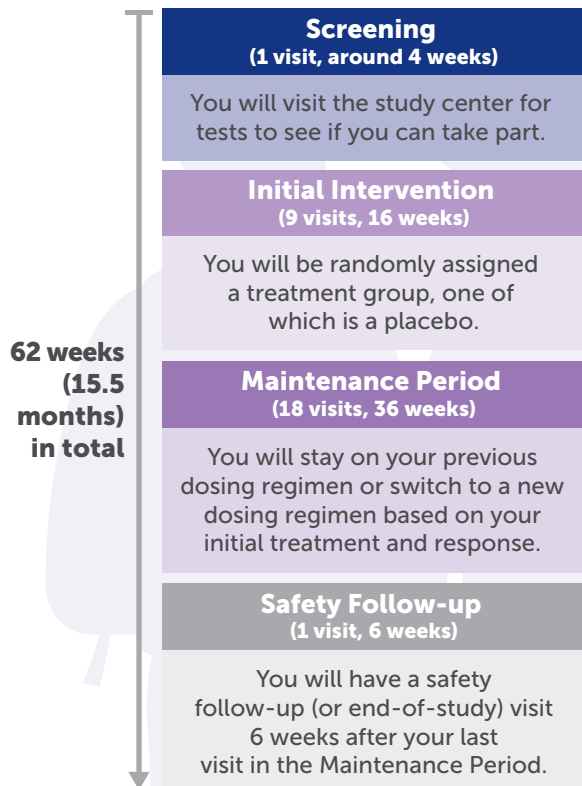
Learn more about the **PossibLity Study** for people with atopic dermatitis (also called eczema).



About the PossibLity Study

The PossibLity Study is a clinical study testing a medicine called galvokimig. This medicine is not approved yet. The study is for people who have atopic dermatitis (AtD), also called eczema.

The goal is to learn more about galvokimig. We hope to learn how well it works to help relieve atopic dermatitis symptoms (this is called efficacy), what kind of side effects participants experience (this is called safety), how it moves through the body (this is called pharmacokinetics), and what it does inside the body (this is called pharmacodynamics).



The PossibLity Study lasts around 15 and a half months per participant. You will visit the study center regularly for study assessments and to receive the study medication.

Initially, you will be randomly assigned (as if by picking a number from a hat) to receive either the placebo or galvokimig during the treatment period. The placebo looks similar and is given the same way as galvokimig but does not contain any medicinally active ingredients.

Placebo is used to be able to measure the effect of the investigational drug. Neither you nor the study doctor will know whether you are receiving galvokimig or the placebo.

During the first 16 weeks you will receive either galvokimig or placebo. After the first 16 weeks, participants who received placebo and whose AtD did not improve will start receiving galvokimig.

Who Can Join the PossibLity Study?

You may be able to join if:

- You are at least 18 years old
- You have been diagnosed with atopic dermatitis for at least 12 months
- More than 10% of your skin is currently affected by atopic dermatitis (the palm of your hand is about 1% of body surface area)
- You have used topical medications (e.g., medicated creams or ointments) for atopic dermatitis in the past 6 months that were not entirely satisfactory

You will need to meet other criteria to join the PossibLity Study. Your study team will discuss these with you.

You can keep using some medications or over-the-counter products (e.g., creams, ointments, emollients) during the study, but there are also certain medications that cannot be used. Please speak to your study team about which medications you can or cannot use during the study.

If your AtD symptoms flare up during the study, you can discuss with your study doctor if you need additional medications on top of the study medication to help with your AtD symptoms.

Reimbursement for study-related travel and expenses can be made available. The study team can tell you more about how that works.

Your participation in the PossibLity Study will contribute to our understanding of atopic dermatitis and how to treat it. By taking part, you will advance our knowledge and potentially improve the lives of those affected by this condition in the future.

About Clinical Studies

A clinical study (also called a clinical trial) is carefully supervised research that is done before a medication becomes available to the public.

- Clinical studies follow specific rules to protect the safety, rights, well-being, and privacy of participants.
- The results help decide if a medication or product is effective, well-tolerated and can be made available to patients.
- Clinical studies are the only way to develop new treatments to improve patient care.

Joining the PossibLity Study is entirely voluntary (meaning participation is completely up to you). If you choose not to take part in this study, it will not affect your usual medical care now or in the future. If you join, you can decide to leave the study at any time and for any reason.

